

# Photoweeek Northwest

for the week of **VIII.3.2009**

*“The Wallowas on Horseback”*

photos & texts by Cliff Crego

[picture-poems.com](http://picture-poems.com)





































**Tommy McClure**, *master farrier, former  
rodeo cowboy, & new resident of Eagle Valley . . .*





A photograph of Frank Randall, an older man with short, light-colored hair, wearing a striped short-sleeved shirt. He is sitting on a brown horse, holding a wooden stick or reins. The background is a clear blue sky with a wooden pole and some wires visible. The text is overlaid on the lower right portion of the image.

**Frank Randall, *Eagle Valley* old-timer with 60 years of experience packing & hunting in the High Wallows on horseback . . .**



**Weighing gear.** *Each packhorse can carry up to 50 k (100 lbs) on both sides, but the loads must be carefully balanced . . .*





**New shoes for my horse, *Rubin*. Tommy's been bucked off some 500 rodeo broncos; he's also shod more than a 100,000 animals, mostly race horses. . .**

















**Tightening up a diamond knot.** *The more carefully the horse is packed, the less likely he is to fall . . .*









**Sawbucks**—*Each of the four packhorses gets both a wet and dry blanket, after which the sawbuck is strapped on . . .*













Frank's horse, ***Buckskin***—the saddle is handmade  
by local *Eagle Valley* craftsman, *Bill Adams* . . .





**Cornucopia Lodge, (1445 m / 4800 ft)—popular starting point in the *South Wallowas* for the *Pine Lakes & Norway Basins*, as well as *Little Eagle Meadows & the East Lakes area* . . .**









# Riding through the *Pine Lakes Burn* (VIII.2005) . . .





















**Arriving at *East Lakes Reservoir***  
(2217 m / 7272 ft), our first camp . . .







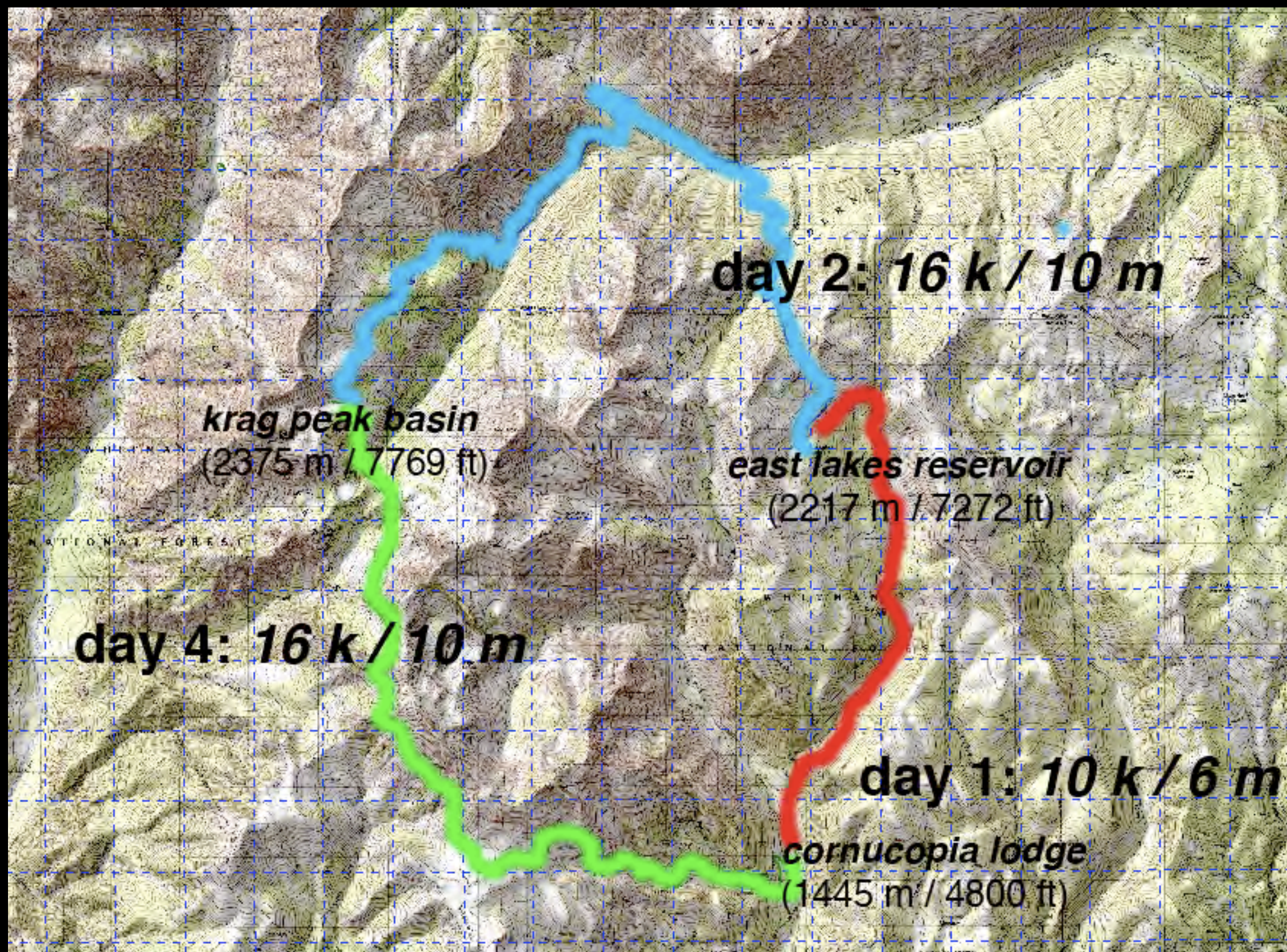


























**Dropping down *Blue Creek* to the *South Fork*  
of the *Imnaha* . . .**













***Dipper Falls . . .***





# Krag Peak Creek . . .













**Krag Peak Basin—*view southwest, VII.2.2009***





**Krag Peak Basin—26 days later, view east . . .**









Form emerges out of movement; it is  
the outward envelope of the rhythmic pulse  
of change.













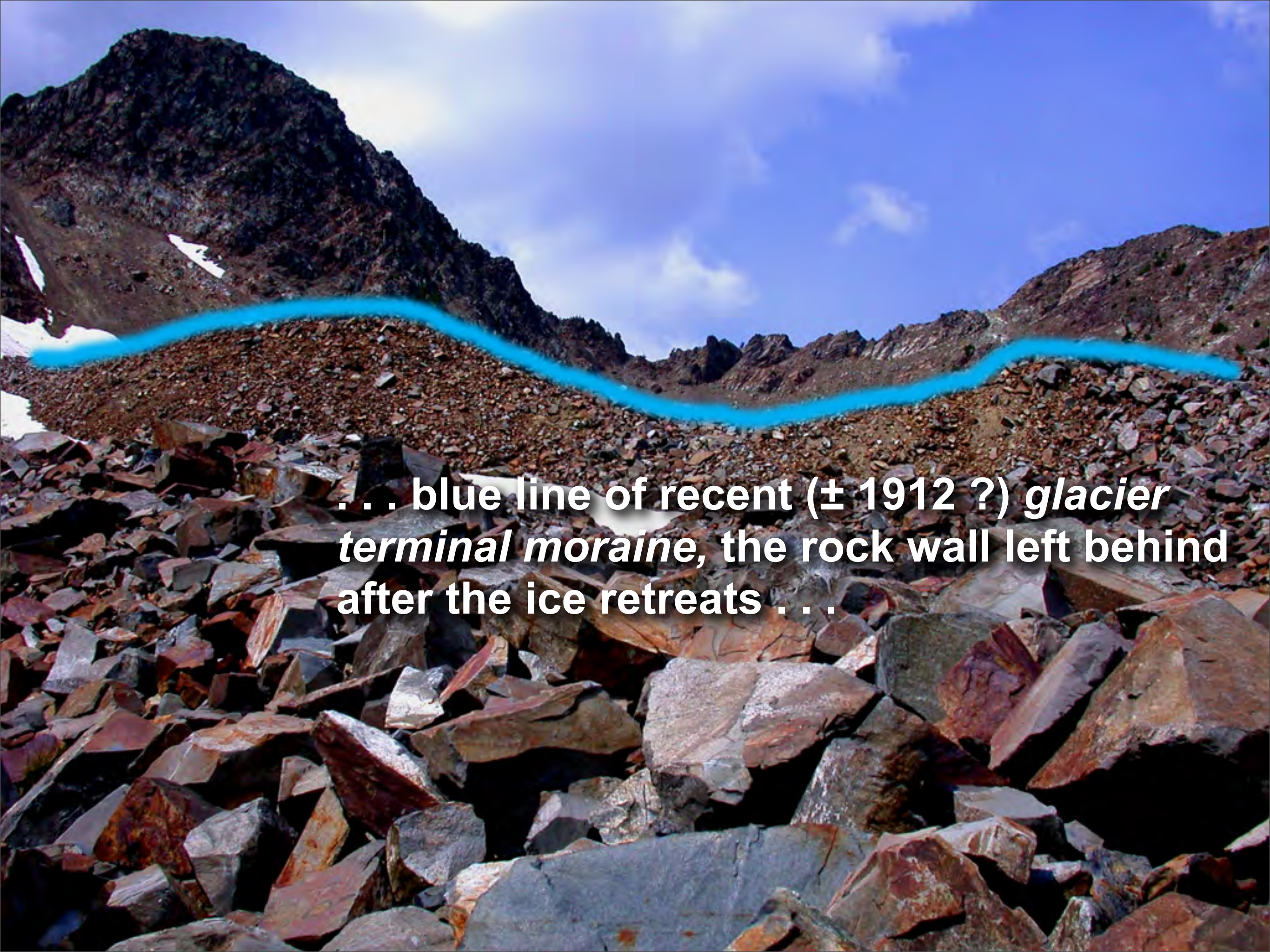










A photograph of a mountainous landscape. In the foreground, there is a large field of dark, angular rocks. In the middle ground, a bright blue line is drawn across the terrain, representing a glacier terminal moraine. The background shows steep, rocky mountain slopes under a blue sky with some clouds. The text is overlaid on the middle ground.

... blue line of recent ( $\pm 1912$  ?) *glacier terminal moraine*, the rock wall left behind after the ice retreats ...



















A scenic mountain landscape with a red line tracing a route across the slopes. The foreground is filled with the green needles and brown branches of a pine tree. In the background, a rugged mountain peak rises above a valley filled with dense evergreen forests. A red line is drawn across the mountain's face, starting from the lower left and winding its way up towards the right, indicating a specific path or route. The sky is a pale blue with some light clouds.

**Part of our route on day  
4 . . .**



**Wranglers go in style!**

































Every well-made path was once only  
a possibility.

Because it is well-made, hard use  
only makes it more beautiful.











***“Stuck in Tuck”**—when a good horse won’t go down a bad, rocky trail . . . at Tuck Pass . . .*

























Coming into *Little Eagle Meadows* . . .

































Looping back to the old mining town of *Cornucopia*









**Here are a few of the Wallowa wildflowers  
we saw along the way . . .**



# Mountain Balm (*Monardella odoratissima*)





**Mountain Balm** (*Monardella odoratissima*) skyview





# Whitestem Frasera (*Frasera albicaulis*)





# White Bog Orchid (*Plantanthera dilatata*)





# Mountain Death Camas (*Zygadenus elegans*)





# Mountain Death Camas (*Zygadenus elegans*) skyview





# Subalpine Arnica (*Arnica rydbergii*)





**Oval-leaf Buckwheat** (*Erigonum ovalifolium* var. *nivale*)





# Alpine Yarrow (*Achillea millefolium* var. *alpinum*)





**Alpine Yarrow** (*Achillea millefolium* var. *alpinum*) detail







# Photoweeek Northwest

*for the week of*

**VIII.3.09**

photos & texts  
*by Cliff Crego*

© 2009 [picture-poems.com](http://picture-poems.com)



*Pictures for sale?* Nothing fades faster than  
an Art that has descended to the level of being  
no more than its own commercial.



*Pictures for sale?* Nothing fades faster than an Art that has descended to the level of being no more than its own commercial.

See the flower cluster that advertises itself with showy, yet infertile blooms along its periphery. No need to remind it that real nectar must be offered at its center to attract for long.





Daniel Murray, *Lamplight Cafe at Hampton Station* (pop. 11)



# Photoweeek Northwest I.26.2009

*35 new images & texts*

*made in the winter*

*High Wallows—*

*by Cliff Crego*

*pdf—*

*4.3 Mb*

© 2009 picture-poems.com



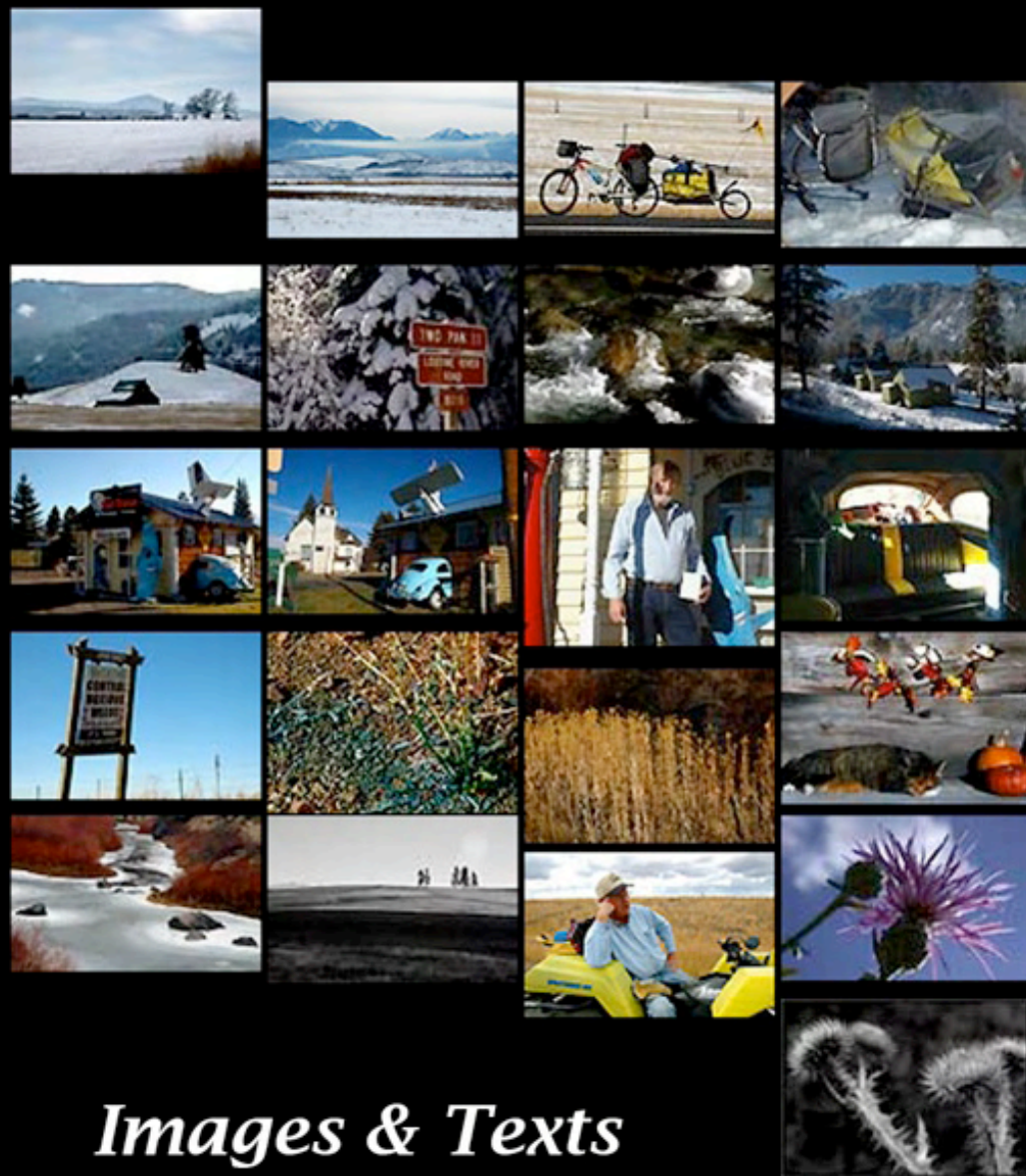


Photoweeek Northwest  
CALENDAR 2009  
*The High Wallows*  
photos by Cliff Grege

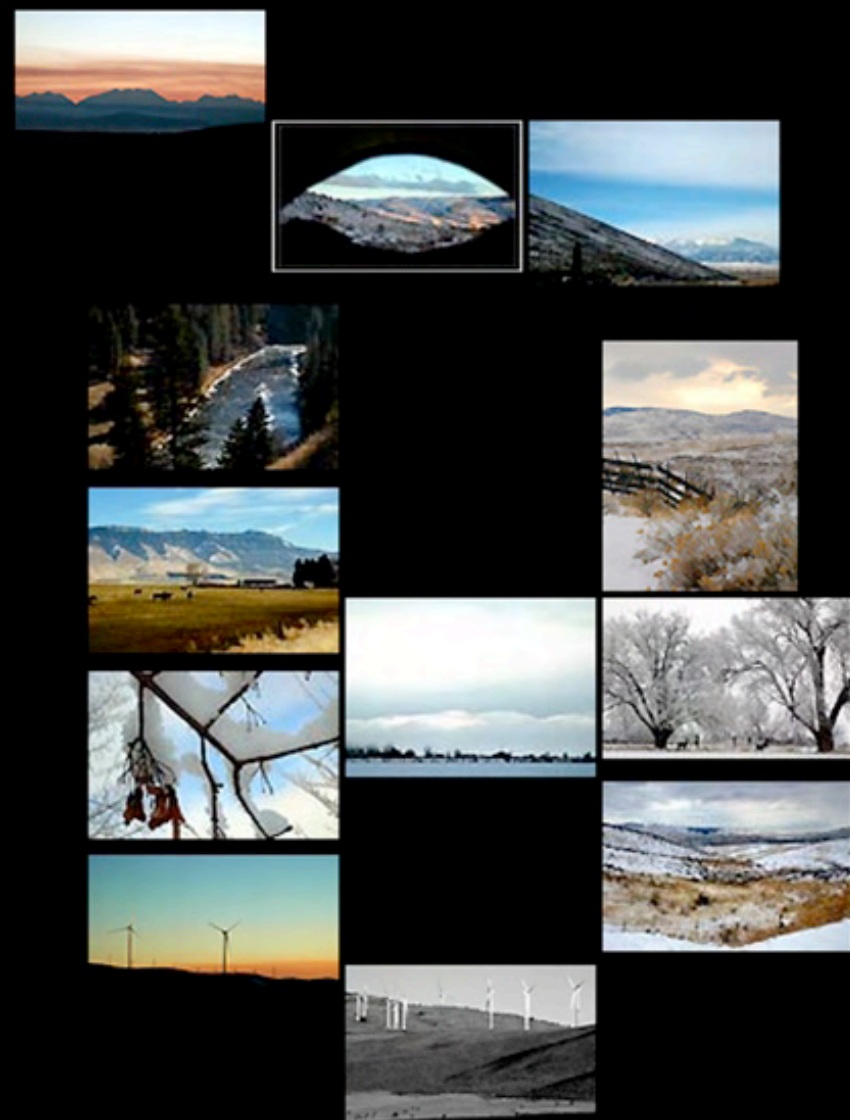
*order your Photoweeek Northwest*  
© 2009 picture-poems.com  
**Calendar 2009 online,**  
*under \$13 + shipping*



# PhotoWeek Northwest



*Images & Texts  
by Cliff Crego*



picture-poems.com



Browse selected images from  
this edition of  
Photoweb Northwest  
at  
the **PicturePoems online store**



**Thanks for viewing!**

You can contact

*Cliff Crego* at

[crego@picture-poems.com](mailto:crego@picture-poems.com)